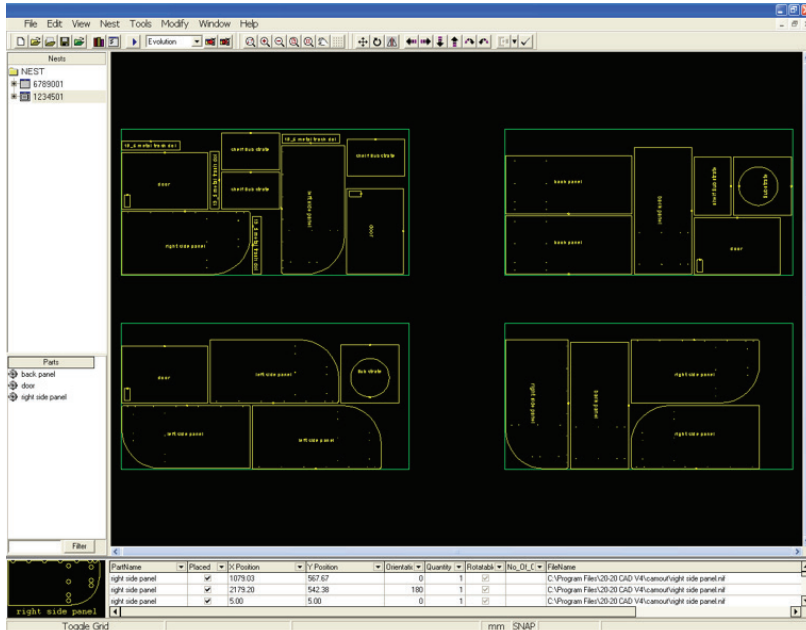
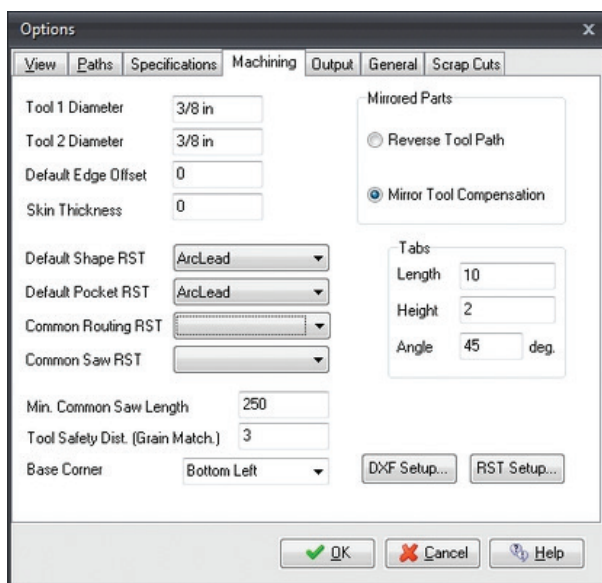


2020 Nest, our true shape nesting solution, automatically places parts on sheet stock to optimize material yield. 2020 Nest is capable of handling jobs of all sizes—from small orders including only a few parts to enterprise-level quantities involving thousands of parts and unique materials.



## Advanced machining features

The embedded true shape nesting solution supports advanced features, including onion-skinning, common-line cutting, tool path optimization and nesting small parts in cavities of larger parts.



## Benefits

### Reduce waste

Automatically nest parts on sheets to optimize material usage, reduce waste and save costs.

### Save time, reduce errors

Automatically create optimized patterns without manual intervention or time-intensive pattern analysis.

### Gain production agility

Easily move production between machines when you generate nest patterns and the resulting CNC code for any machine type.

### Enhance product innovation

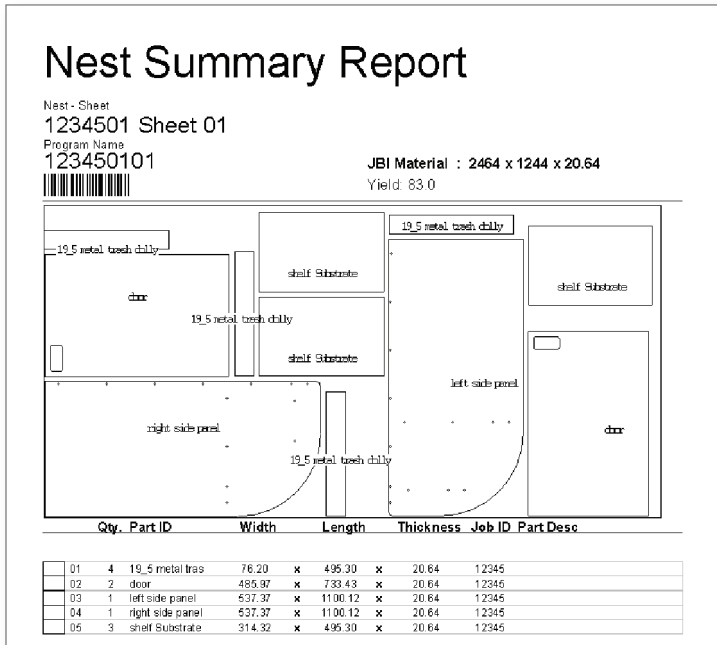
Enhance the product innovation process by automating machine integration for both standard and custom products.

### 2020 Insight integration

Integrate with 2020 Insight to optimize parts and sub-assemblies for entire production orders, even when parts should be cut from multiple materials and on multiple machines.

## Standard reporting

2020 Nest includes standard reports for material requirements lists and labeling, including Nest Summary Report, Parts Summary Report, Material Usage Report and Part Labels.



## Production agility

2020 Nest supports multiple CNC machine outputs so that the same nest can be posted to all machine types. This flexibility allows the plant to adapt quickly when it becomes necessary to move production to another machine.

Output CNC code to all machine brands, including:

Accusystem	Busellato	Koch	Northwood	Shoda
Alberti	CMS	Komo	Onsrud	Thermwood
Anderson	Heian	Morbidelli	SCM	Weeke
Biesse	IMA			

## Features

### Automatically optimize material

Generate optimized patterns while considering grain information, yield goals, material specifications and machine layouts.

### Make modifications as needed

Use the system-generated nests, or manually place parts, scrap cuts, and crop cuts in a user-friendly interface.

### Manage scrap cuts

Define how the system handles scrap material in the layout—set minimum scrap area, limit scrap cuts or limit the number of per-sheet scrap cuts.

### Generate reports

Includes standard, yet customizable reports for material requirements lists and labeling.

### Input from standard sources

Import standard file types into 2020 Nest: DXF, MPR, FXM, XXL, APT, CID and more.

### Support for all controllers

Supports proprietary machine controllers like Weeke, Biesse and SCM, as well as generic machine controllers like Fanuc, Siemens, Allen-Bradley and more.

TF: +1.888.216.1844 T: +1.919.319.0888 F: +1.919.319.0884 E: mfg.sales@2020spaces.com

[2020spaces.com](http://2020spaces.com)

**2020**

### 2020 Headquarters

20-20 Technologies, Inc.  
400 Armand-Frappier Blvd.  
Suite 2020  
Laval, QC Canada H7V 4B4

### Worldwide Offices

**Americas**  
Laval, QC, Canada  
Cary, NC, USA  
Foxboro, MA, USA  
Grand Rapids, MI, USA  
São Paulo, Brazil

**Europe**  
Wiener Neustadt, Austria  
Mouans-Sartoux, France  
Osnabrück, Germany  
Ashford, UK  
Bolton, UK

**Asia-Pacific**  
Dhaka, Bangladesh  
Guangzhou, China  
Shanghai, China  
Pune, India